

LOAD

Liaison on
Alcohol and other
Drugs

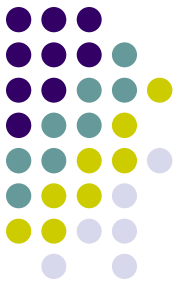


National Addiction Sector **N E W S**



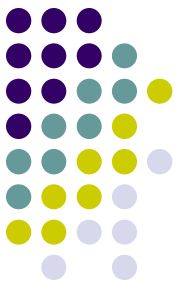
Tackling Methamphetamine: an Action Plan

2009

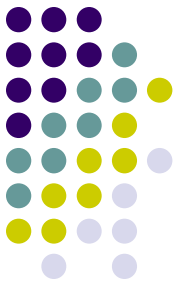


- Better routes into treatment through more addiction services and a stronger workforce
- National funding for more beds incl social detox, after-care, incl those in criminal and justice systems
- More consistent assessment tool and use of ADOM – AOD outcome measure

METHAMPHETAMINE INTERVENTION SERVICE



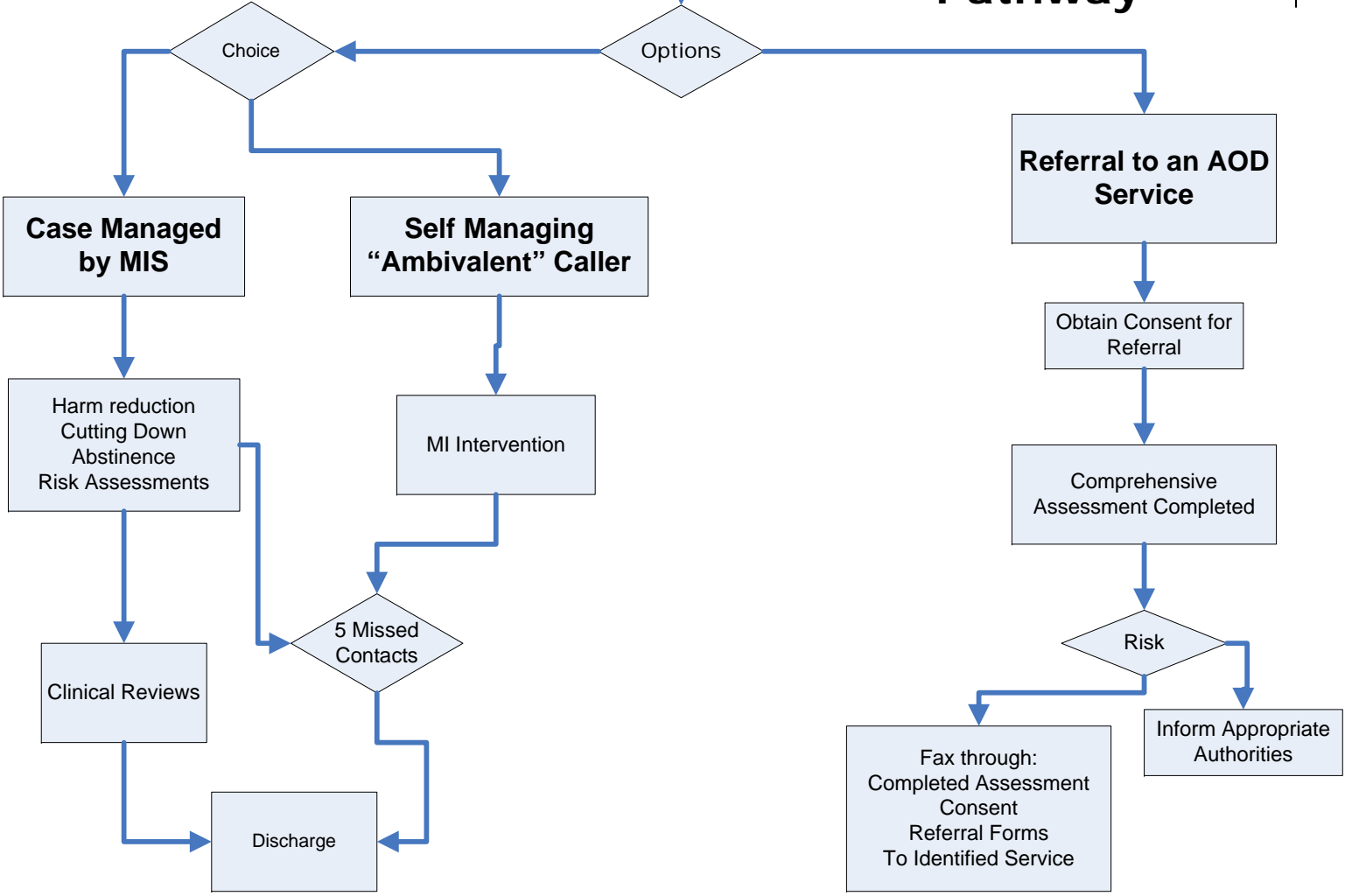
- telephone referrals
- provide a telephone based assessment and treatment service
- screening
- brief intervention,
- specialist comprehensive assessment,
- case management,
- integrated care for those experiencing co-existing problems of addiction and mental health,
- regular review of the treatment plan,
- referral to others services and agencies,
- support to enhance recovery and reduce the risk of relapse and the development of cultural links.



Identification of Preferred Options for Caller

MIS Pathways

External Treatment Pathway



METHAMPHETAMINE INTERVENTION SERVICE



- 1.5 FTE
- 3 Brief Intervention Counsellors
- Lines open 10am to 10pm

0800787797

Drug Use in New Zealand

Key Results of the 2007/08 New Zealand Alcohol and Drug Use Survey



Ministry of Health. 2010. *Drug Use in New Zealand: Key Results of the 2007/08 New Zealand Alcohol and Drug Use Survey*. Wellington: Ministry of Health.

Published in January 2010 by the Ministry of Health

This document is available on the Ministry of Health's website: <http://www.moh.govt.nz>

Key findings

Recreational drug use among the New Zealand population aged 16–64 years in 2007/08.



Prevalence of

having **ever used** for recreational purposes, was highest for the following drugs:

- **cannabis** (46.4%)
- **BZP party pills** (13.5%)
- **LSD/synthetic hallucinogens** (7.3%)
- **amphetamines** (7.2%)
- **kava** (6.3%)
- **ecstasy** (6.2%).

... in the **last 12 months** was highest for:

- **cannabis** (14.6%)
- **BZP party pills** (5.6%)
- **ecstasy** (2.6%)
- **amphetamines** (2.1%)
- **LSD/ synthetic hallucinogens** (1.3%).

Use of any drug for recreational purposes

Nearly one in two adults

(49.0%) had used drugs

(excluding alcohol, tobacco and BZP party pills) for recreational purposes at some point in their lifetime, equating to about

1,292,700 people in the total population aged 16–64 years in New Zealand.

Misuse of Drugs Act (MODA)

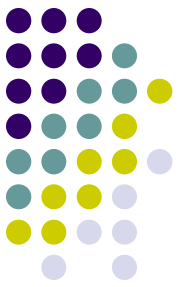


- The Law Commission has completed two years of careful analysis and consultation on this obsolete Act
- current law is its absolute focus on controlling New Zealand's drug problem by concentrating solely on drug supply

MODA review



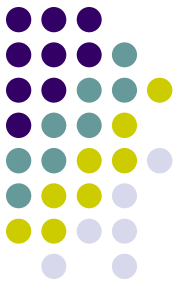
- review covers substantial ground including:
 - how drugs should be classified;
 - a new control regime over medicinal cannabis;
 - principles around compulsory admission for addiction treatment
- **Have your say by 30 April.**
- Anyone can make a submission on the drug law review by writing to the Law Commission, or providing feedback on the Commission's website www.talklaw.co.nz.



Important diary dates

- Matua Raki Leadership Day Christchurch
25 March
- MODA submissions due
30 April 2010
- ALAC Working Together Conference
6-7 May
- Cutting Edge Auckland
22 – 25 Sept 2010

Useful Web Links



- DAPAANZ

www.dapaanz.org.nz/

Draft competencies will be distributed for broader consideration in mid 2010. If you would like to participate in focus groups or you are available to review draft competencies before the consultation phase please contact Paula Parsonage, Project Manager at: 09 3781843 or hsd@xtra.co.nz. Your input and participation would be greatly appreciated.

- Tackling Methamphetamine: an Action Plan

www.beehive.govt.nz/sites/all/files/ActionPlan.pdf

- Te Pou and Let's Get Real

www.tepou.co.nz/page/571-Implementation-of-i-Let-039-s-get-real-i

- MODA Law Commission feedback on

www.talklaw.co.nz.

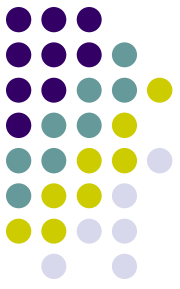
- Drug Foundation

www.drugfoundation.org.nz/moda

Additional resources to support people making submissions and detailed analysis of the Law Commission's proposals, will be published on the Drug Foundation's drug law review website

City 2 Surf

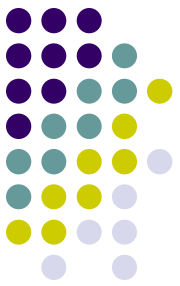
Sunday 21 March



Price: NZ\$12.00

- **Get your Entry Pack before the day from:**
- **The Athletes Foot,**
- **BNZ branches,**
- **CCC Leisure centres / Pools,**
- **The Star or**
- **online.**

<http://www.city2surf.co.nz/content.asp?pageid=65335&xid=1&orgfn=enter-here>



12 km or 6km

- **The Cathedral Square Start -12km**
 - * Runners - start at 9.05am, assemble on the north side of the square
 - * Walkers - start after the runners, assemble on the south side of the square (BNZ side of the Cathedral)

- **The Porritt Park Start – 6km**
The Heart Foundation
Gather at Porritt Park
 - * 9.45am - Warm up with a fitness instruction from the CCC Recreation & Leisure Centres
 - * Walkers and runners in the 6km distance start at 10am and merge with the 12km entrants.

- **Late registrations** available from both starting venues,,,,,

Everyone's Welcome to join us - especially consumers / service users



- Walk or run or come along to support
- Come to the ADANZ Team Tent at the QEII for a sausage'n bread, cold drink and skite
- Great entertainment for whanau friends family so get them along as well
- Walk run or a bit of both, all 12km or half (6km)
- Buses to and from QEII and the Square
- Ring 3798626 if you want us to help you enter
- Remember to prepare by buiding up to a 2hour walk every second day
- Or running every second day until you are running at least for an hour or more